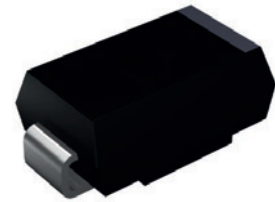


: YU i f Yg

- Schottky barrier rectifiers
- Low leakage current
- Low forward voltage drop
- Moisture sensitivity: level 1, per J-STD-020
- Halogen-free according to IEC 61249-2-21 definition
- High temperature soldering guaranteed: 260°C/10 seconds



RoHS
COMPLIANT



8 C!&% 5 5 'fGA 6 L'

5 dd`]WUjcbg

For use in low voltage, high frequency inverters, free-wheeling and polarity protection application.

AU]a i a 'FUj b[g' (T_A=25°C unless otherwise specified)

Parameter	Symbol	SL52B	SL53B	SL54B	SL55B	SL56B	SL57B	SL58B	SL59B	SL510B	Unit
Maximum Repetitive Peak Reverse Voltage	V _{RRM}	20	30	40	50	60	70	80	90	100	V
Maximum RMS Voltage	V _{RMS}	14	21	28	35	42	49	56	63	70	V
Maximum DC Blocking Voltage	V _{DC}	20	30	40	50	60	70	80	90	100	V
Maximum Average Forward Rectified Current	I _{F(AV)}	5									A
Peak Forward Surge Current, 8.3ms Single Half Sine-Wave Superimposed on Rated Load	I _{FSM}	120			250						A
Thermal Resistance, Junction to Ambient ¹	R _{θJA}	85									°C/W
Thermal Resistance, Junction to Case ¹	R _{θJC}	15									
Thermal Resistance, Junction to Lead ¹	R _{θJL}	20									
Operating Junction Temperature Range	T _J	-55 to +125			-55 to +150						°C
Storage Temperature Range	T _{STG}	-55 to +150									°C

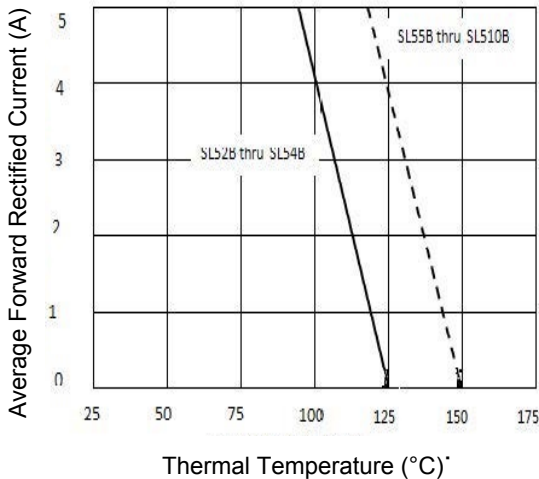
Notes:

1. Mounted on copper pad area of 0.2 x 0.2" (5.0 x 5.0mm) to each terminal.

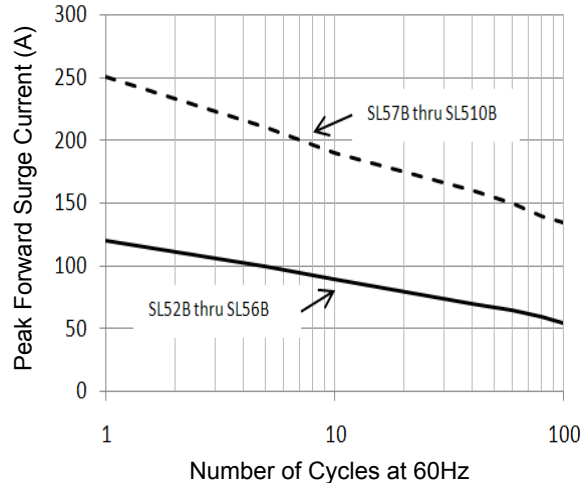
9`YWF]WU`7\ UFUWYf]gh]Wg (T_A=25°C unless otherwise noted)

Parameter	Symbol	Test Conditions	SL52B	SL53B	SL54B	SL55B	SL56B	SL57B	SL58B	SL59B	SL510B	Unit
Forward Drop Voltage	V _F	I _F =5A	0.45			0.50		0.70				V
Reverse Leakage Current @ V _R	I _R	T _J =25°C	0.5			0.05						mA
		T _J =100°C	50									
Typical Junction Capacitance	C _J	4.0V, 1MHz					350				pF	

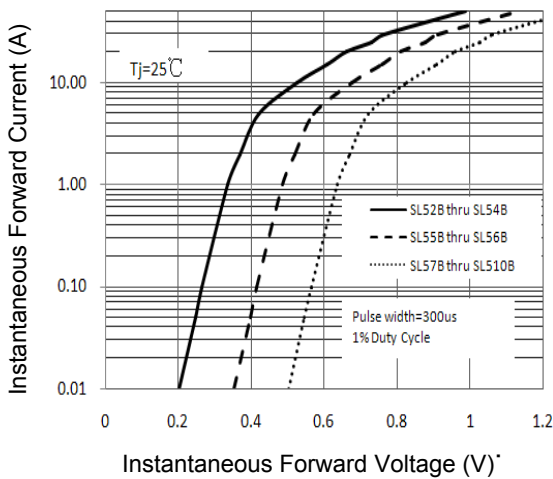
F U_hb[g'UbX'7\ UFUWYf]gh]Vg'7 i fj Yg' (T_A=25°C unless otherwise noted)



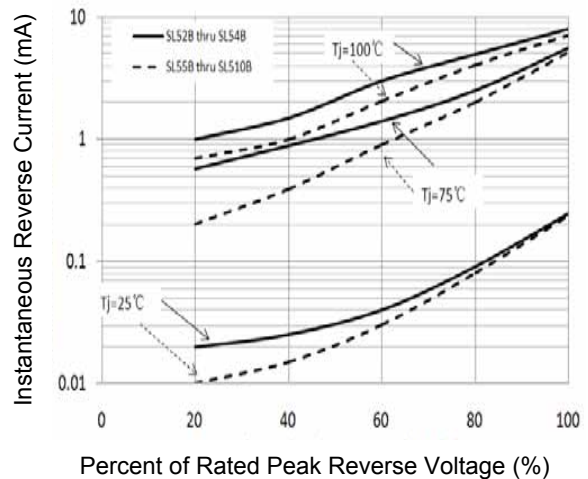
: [[i fY%' : cfk UFX'7 i ffYbh8 YfU_hb['7 i fj Y'



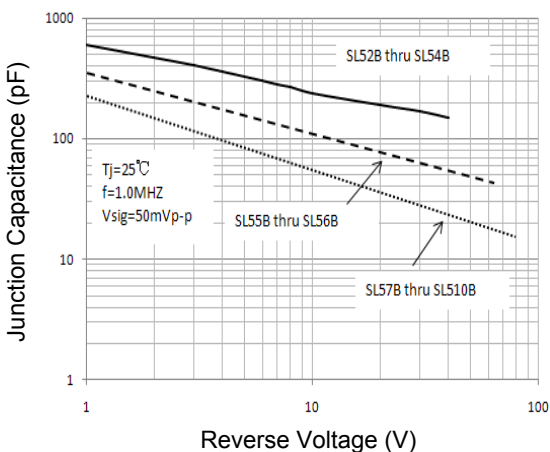
: [[i fY'&' AU Ja i a 'Bcb!FYdY_h]j Y'DYU_ : cfk UFX Gi f[Y'7 i ffYbh



: [[i fY' "Hnd]WU' =bgHUb_hYci g' : cfk UFX' 7\ UFUWYf]gh]Vg'

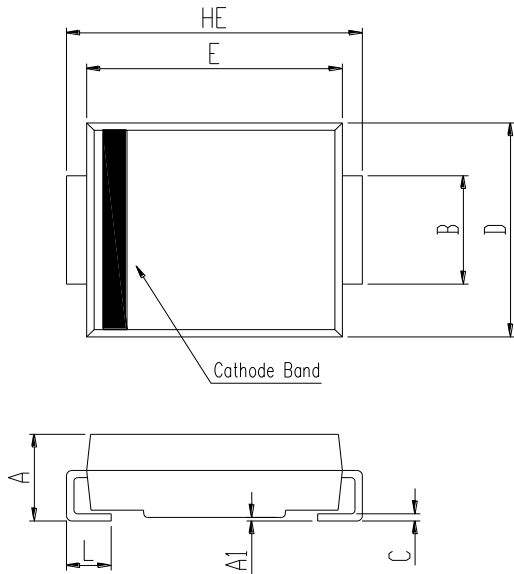


: [[i fY' ("Hnd]WU' FYj YfgY7\ UFUWYf]gh]Vg'



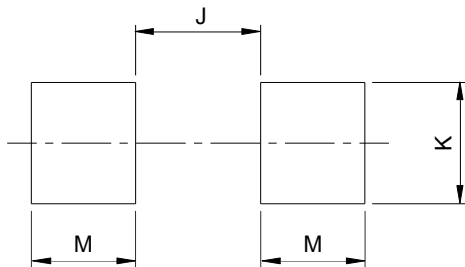
: [[i fY' "Hnd]WU' >i bW_hcb'7 UdU_hU_hW'

DUW U[Y Ci h]bY'8 ja Ybg]cbg'8 C!&% 5 5 'fGA 6 L



SMB (DO-214AA)				
DIM	Millimeters		Inches	
	Min.	Max.	Min.	Max.
A	1.99	2.61	0.078	0.103
A1	0.05	0.20	0.002	0.008
B	1.93	2.08	0.076	0.082
C	0.15	0.31	0.006	0.012
D	3.48	3.73	0.137	0.147
E	4.25	4.75	0.167	0.187
HE	5.26	5.46	0.207	0.215
L	0.90	1.41	0.035	0.056

Recommended Pad Layout



SMB Recommended Pad Layout (Reference Only)				
DIM	Millimeters		Inches	
	Min.	Max.	Min.	Max.
J	-	2.60	-	0.102
K	2.20	-	0.087	-
M	1.80	-	0.071	-

Order Information

Device	Package	Marking	Carrier	Quantity
SL52B	DO-214AA (SMB)	SL52B	Tape & Reel	3,000pcs / Reel
SL53B	DO-214AA (SMB)	SL53B	Tape & Reel	3,000pcs / Reel
SL54B	DO-214AA (SMB)	SL54B	Tape & Reel	3,000pcs / Reel
SL55B	DO-214AA (SMB)	SL55B	Tape & Reel	3,000pcs / Reel
SL56B	DO-214AA (SMB)	SL56B	Tape & Reel	3,000pcs / Reel
SL57B	DO-214AA (SMB)	SL57B	Tape & Reel	3,000pcs / Reel
SL58B	DO-214AA (SMB)	SL58B	Tape & Reel	3,000pcs / Reel
SL59B	DO-214AA (SMB)	SL59B	Tape & Reel	3,000pcs / Reel
SL510B	DO-214AA (SMB)	SL510B	Tape & Reel	3,000pcs / Reel