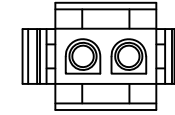
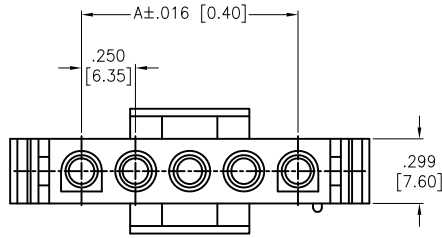
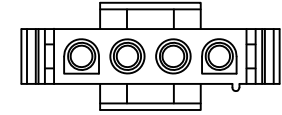


APPROVED: \_\_\_\_\_  
 DATE: \_\_\_\_\_ TITLE: \_\_\_\_\_

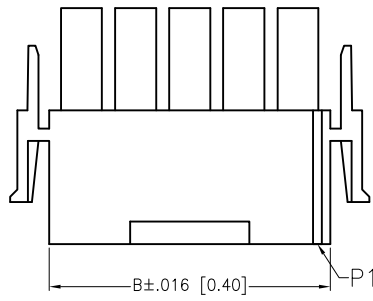
Rev	AWO #	Description	Date	Appr
-		RELEASED	3/2/18	
A		UPDATE DRAWING	2/19/20	AY/AY1
B		UPDATE DRAWING	2/21/20	LH/AY1



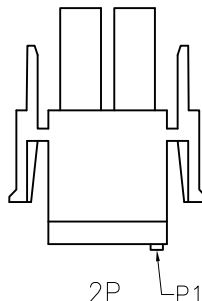
02P



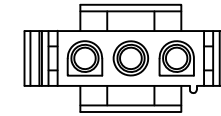
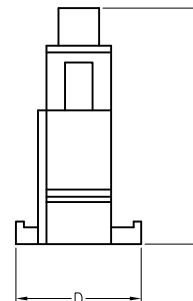
04P



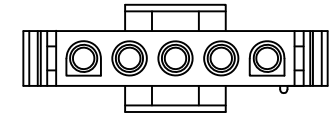
03~10P



2P P1



03P



05~10P

**PRODUCT VIEW**

Poles	Dimensions			
	A	B	C	D
02	.250 [6.35]	.561 [14.25]	1.091 [27.70]	.583 [14.80]
03	.500 [12.70]	.799 [20.30]	1.094 [27.80]	.579 [14.70]
04	.750 [19.05]	1.050 [26.67]	1.087 [27.60]	.579 [14.70]
05	1.000 [25.40]	1.307 [33.20]	1.094 [27.80]	.583 [14.80]
06	1.250 [31.75]	1.550 [39.37]	1.087 [27.60]	.583 [14.80]
07	1.500 [38.10]	1.800 [45.72]	1.087 [27.60]	.583 [14.80]
08	1.750 [44.45]	2.050 [52.07]	1.087 [27.60]	.583 [14.80]
09	2.000 [50.80]	2.300 [58.42]	1.087 [27.60]	.583 [14.80]
10	2.250 [57.15]	2.550 [64.77]	1.087 [27.60]	.583 [14.80]

**SPECIFICATIONS:**

Material:  
 Insulator: Nylon66, rated UL 94V-2  
 Insulator color: Natural  
 Electrical:  
 Current rating: 02~10P: 12 Amp Max (With UL1015, 12AWG)  
 Contact resistance: 20 mohms max  
 Insulation resistance: 1,000M ohms min  
 Dielectric withstanding voltage: 2,900 VAC for 1 minute  
 Temperature Rating:  
 -40°C to +105°C  
 Environmental:  
 Lead free, RoHS compliant.



UNLESS OTHERWISE SPECIFIED  
 ALL DIMENSIONS ARE INCHES [MM]  
 TOLERANCES: EXCEPT AS NOTED  
 INCHES HOLES  
 .X ± .10 ØX ± .10  
 .XX ± .020 ØXX ± .015  
 .XXX ± .015 ØXXX ± .010

**ADAM TECH** INTERCONNECTS  
 909 Rahway Avenue,  
 Union, NJ 07083  
 Phone: 908-687-5000  
 Fax: 908-687-5710

APPROVALS		DATE
DRAWN	AY	3/2/18
CHECKED	AC	3/2/18
APPROVED		

TITLE .250 [6.35MM] PITCH CONNECTOR, 02~10 POS HOUSINGS, MALE, VERTICAL		
SIZE X	PART NO. DME-M2-XX	REV. B
REF: S00124T	SCALE: NTS	SHEET 1 OF 1