

## Type MEC-DL DC Filter Capacitor

Shizuki™ MEC-DL capacitors are designed with PCB board mounting in mind. Their lead spacing and compact size are conducive for low inductance (<1nH per mm of lead spacing). They are available with a single lead or dual leads depending on the current or application requirements.

Applications include but are not limited to: frequency converters, solar power inverters and DC filtering applications.

This product uses segmented film technology for safety at the end of life of the capacitor.



MEC-DL

## General Specifications

Parameter	Value
Capacitance	10μF – 100μF
Tolerance	±5%, ±10%
Rated Voltage	450, 850, 950 VDC
Temperature Range (operational)	-40/85C
Temperature Range (Storage)	-40/105C
RMS Current	Up to 20 Arms
Standards	IEC61071
Case	PBT UL-94V-0 Standard
Fill Material	Epoxy
Terminals	Tin Plated Copper Wire
Mounting Position	PCB Through Hole
Tan δ	$2 \times 10^{-4}$ Polypropylene
Terminal to Terminal Test	1.5 x Un 10 seconds
Terminal to Case Test	$U_{T-CASE} = 2000 \text{ Vrms @ } 50 \text{ Hz for } 10 \text{ seconds}$
Reliability	100 FIT

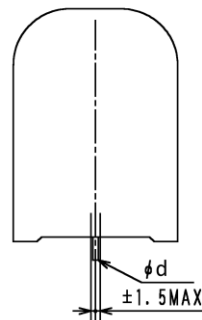
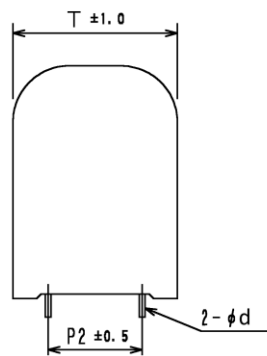
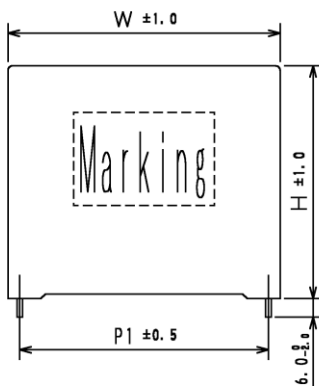
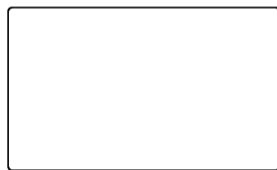
## Applications

DC Filtering  
 Frequency Converters  
 Solar Inverters  
 Micro Inverters

### MEC-DL Specifications

Cap [μF]	I <sub>RMS</sub> (10kHz) [A <sub>RMS</sub> ]	ESR (10kHz) [mΩ]	dV/dt [V/μs]	Max Tan δ (1kHz)	Lead Style	"W" [mm]	"H" [mm]	"T" [mm]	"P1" [mm]	"P2" [mm]	ød [mm]
<b>450 VDC</b>		<b>675 Vsurge</b>									
10	7	7.4	43	0.3%	2	32	38.5	24	27.5	-	1.2
15	10	4.9	43	0.3%	2	32	38.5	24	27.5	-	1.2
20	12	3.7	43	0.3%	2	32	38.5	24	27.5	-	1.2
75	17	4.3	18	0.3%	2	58	50.0	35	52.5	-	1.2
75	17	4.3	18	0.3%	2	58	50.0	35	52.5	20.3	1.2
80	18	4.0	18	0.3%	2	58	50.0	35	52.5	-	1.2
80	18	4.0	18	0.3%	4	58	50.0	35	52.5	20.3	1.2
100	21	3.2	18	0.3%	2	58	50.0	35	52.5	-	1.2
100	21	3.2	18	0.3%	4	58	50.0	35	52.5	20.3	1.2
<b>850 VDC</b>		<b>1275 Vsurge</b>									
10	10	5.6	57	0.2%	2	32	38.5	24	27.5	-	1.2
45	16	5.4	24	0.2%	2	58	50.0	35	52.5	-	1.2
45	16	5.4	24	0.2%	4	58	50.0	35	52.5	20.3	1.2
50	17	4.9	24	0.2%	2	58	50.0	35	52.5	-	1.2
50	17	4.9	24	0.2%	4	58	50.0	35	52.5	20.3	1.2
55	18	4.4	24	0.3%	2	58	50.0	35	52.5	-	1.2
55	18	4.4	24	0.3%	4	58	50.0	35	52.5	20.3	1.2
<b>950 VDC</b>		<b>1425 Vsurge</b>									
40	16	5.4	27	0.2%	2	58	50.0	35	52.5	-	1.2
40	16	5.4	27	0.2%	4	58	50.0	35	52.5	20.3	1.2

### Dimensions [mm]:



### Ordering Information:

Type	Lead Style	Capacitance	Tolerance	Voltage
MEC-DL	(2) = 2 Lead	7	5 = ±5%	450
	(4) = 4 Lead	↕	10 = ±10%	↕
		100		1300

Examples:	Order Code
Type MEC-DL, 2 Lead, 22μF ±5%, 850 VDC	MEC-DL(2) 22-5-850
Type MEC-DL, 4 Lead, 60μF ±10%, 1100 VDC	MEC-DL(4) 60-10-1100